

## Eastern New Mexico University

### Participation in the student exchange program

| Current Status with CONAHEC    |   | Deadline for Applications       |
|--------------------------------|---|---------------------------------|
| Hosting International Students | Yes<br>25   | Fall: 1-Apr<br>Spring: 1-Oct    |
| Sending Students Abroad        | Yes<br>8 students or up to the number of international students hosted. | Varies at each host institution |



### Who can participate?

#### Academic programs available for exchange students:

Agriculture, Anthropology, Biochemistry, Biology, Business Administration (Several Fields), Chemistry, Communication, Computer Science, Criminal Justice, Education, Electronics Engineering Technology, English, Fine Arts (Several Fields), Health and Physical Education, History, Kinesiology, Mathematics, Psychology, Religion, Sociology, Spanish. **Restrictions:** None

**Students' requirements:** Admitted to program at home institutions. TOEFL IBT 61 or IELTS 6.0

### Information for international students

- **Academics**

**Main language of Instruction:** English

**Are there any regular classes available in a different language?** No.

**Full-time academic load per term:** 12-18 Credits per semester

- **Living**

**Approximate living costs per semester:** \$4,950 includes: Housing (shared) \$1,783, Meals \$1,867, books, insurance, personal insurance \$1,300

**Additional fees:** Student ID card: \$25.00. For more information regarding fees please check <https://www.enmu.edu/admission/tuition-and-fees>



### Institutional Information



**Institution Name:** Eastern New Mexico University

**Country:** United States

**Location:** ENMU is located in the city of Portales, NM. Portales is located near the eastern border of New Mexico about 220 miles from Albuquerque, 220 miles from Santa Fe, and about 110 miles from Amarillo and Lubbock, Texas. Portales is a city of 12,000 and the county seat of Roosevelt county. The valley in which Portales is located is remnant of an ice age drainage system and is a highly productive agricultural area producing several crops, including Portales' best known product, the Valencia peanut. Dairy and cattle production add to the agriculture-based economy.

**Website:** <http://www.enmu.edu/>

**Description:** Eastern New Mexico University, a state institution offering bachelor's and master's degrees, serves students from New Mexico and around the world. Educational Programs are offered at the Portales campus and also by interactive distance education, public broadcast television, a university center in Ruidoso, New Mexico, and branch/community college in Roswell, New Mexico.

For more information about Eastern New Mexico University please see the university's webpage: <http://www.enmu.edu/>

# Lenoir-Rhyne University

## Participation in the student exchange program

| Current Status with CONAHEC    |   | Deadline for Applications       |
|--------------------------------|---|---------------------------------|
| Hosting International Students | Yes<br>3  | Fall: 7-Mar<br>Spring: 7-Oct    |
| Sending Students Abroad        | Yes<br>8 students or up to the number of international students hosted. | Varies at each host institution |



### Institutional Information



**Institution Name:** Lenoir-Rhyne University

**Country:** United States

**Location:** Lenoir-Rhyne is located in Hickory, North Carolina.

**Website:** <http://www.lr.edu>

**Description:** The University is a private liberal arts university founded in 1891. Current enrollment is around 1,600 students.

For more information about Lenoir-Rhyne please see the university's webpage: <http://www.lr.edu/>

## Who can participate?

### Academic programs available for exchange students:

Fine Arts (Several Fields), History, Philosophy, Political Science, Psychology, Social Work, Religion, Sociology, Biology, Chemistry, Physics, Business Administration (Several Fields), Computer Science, Mathematics, Information Systems, Communication, Music. **Restrictions:** Education and Nursing. **Students' requirements:** Must be a student in good standing at a participating CONAHEC member institution.

### Information for international students

- **Academics**

**Main language of Instruction:** English. Click here for to see our [Undergraduate Course Catalog](#) Are there any regular classes available in a different language? No.

**Full-time academic load per term:** 12-18 U.S. Credit.

- **Living**

**There are so many ways to get involved at LRU! Check out our Student Life here:**

<https://www.lr.edu/student-life>

**Approximate living costs per semester:** Exchange students get the opportunity to live in our Global Village, which is a Living Learning Community for international students, U.S. students returning from study abroad, and other students that have an international focused major like business or politics. Community members co-lead cultural and social activities throughout the semester to connect with each other. Housing costs \$6,255 (includes an unlimited meal plan) per semester and Health Insurance is mandatory for \$622.

For more information, please check the specific website for international students:

<https://www.lr.edu/student-life/office-for-international-education>



# Lyon College

## Participation in the student exchange program

| Current Status with CONAHEC    |   | Deadline for Applications       |
|--------------------------------|---|---------------------------------|
| Hosting International Students | Yes<br>2  | Fall: 15-May<br>Spring: 1-Oct   |
| Sending Students Abroad        | Yes<br>8 students or up to the number of international students hosted. | Varies at each host institution |



## Who can participate?

### Academic programs available for exchange students:

Fine Arts (Several Fields), Biology, Business Administration, Chemistry, Computer Science, English, History, Mathematics, Music, Political Science, Psychology, Religion, Exercises Science, Data Science, Economics. **Restrictions:** None

**Students' requirements:** Required test scores: TOEFL-79 or IELTS-6.5. For information on eligibility click here: <https://www.lyon.edu/international-applicants>

## Information for international students

- **Academics**

**Main language of Instruction:** English

**Are there any regular classes available in a different language?** No.

**Full-time academic load per term:** Contact institution for more information

- **Living**

**Approximate living costs per semester:** Housing and Meals: \$5,365. Local transportation: \$250. Others: health insurance \$700. Enrollment deposit \$250.

**Additional fees:** Average cost of books: 750 / Application fee: 50.00 / Technology & Student Activity Fees: \$482 (per semester). For more information, please check the specific website for international students: <https://www.lyon.edu/international-students>



## Institutional Information



**Institution Name:** Lyon College

**Country:** United States

**Location:** 2300 Highland Road

Batesville, Arkansas 72503

**Website:** <http://www.lyon.edu/>

**Description:** Lyon College is an independent, residential, co-educational, undergraduate liberal arts college located in Batesville, Arkansas. It is affiliated with the Presbyterian Church (U.S.A.). Founded in 1872, it is the oldest independent college in Arkansas.

For more information on Lyon College please see the university's webpage:

<https://www.lyon.edu/about-lyon>



# Methodist University

## Participation in the student exchange program

| Current Status with CONAHEC    |   | Deadline for Applications       |
|--------------------------------|---|---------------------------------|
| Hosting International Students | Yes<br>6  | Fall: 1-Apr<br>Spring: 30-Oct   |
| Sending Students Abroad        | Yes<br>8 students or up to the number of international students hosted. | Varies at each host institution |



## Institutional Information



**Institution Name:** Methodist University

**Country:** United States

**Location:** 5400 Ramsey Street

Fayetteville, NC 28311

**Website:** <http://www.methodist.edu>

**Description:** Methodist University, known until 2006 as Methodist College, is a private university that is historically related to the North Carolina Annual Conference of the United Methodist Church and is located in Fayetteville, North Carolina. It is regionally accredited by the Southern Association of Colleges and Schools Commission on Colleges (SACSCOC). Methodist University offers over 80 majors and concentrations in five undergraduate schools and four graduate programs. A fifth graduate program (and first doctoral-level program), the Doctor of Physical Therapy Program, began enrolling students in Fall 2015.

For more information on Methodist University please see the university's webpage: <http://www.methodist.edu>

## Who can participate?

### Academic programs available for exchange students:

Fine Arts (Several Fields), Biology, Business Administration, Chemistry (Several Areas), Communication, Computer Science, English, History, Mathematics, Modern Languages, Philosophy, Political Science, Psychology, Sociology. **Restrictions:** None

**Students' requirements:** 3.0 GPA or equivalent AND completion of 60 credit hours prior to exchange

## Information for international students

- Academics**

**Main language of Instruction:** English

**Are there any regular classes available in a different language?** No.

**Full-time academic load per term:** Contact institution for more information

- Living**

**Approximate monthly living costs:** Housing: \$2886. Meals: \$3054. Others: Student Health Insurance \$1308. books and other fees \$900.

**Additional fees:** Student Health Insurance: \$1,308 per semester; Books range from \$450-\$800 per semester; Other fees \$165. For more information regarding fees, please see: <http://www.methodist.edu/tuition-fees>



# New Mexico State University

## Participation in the student exchange program

| Current Status with CONAHEC    |   | Deadline for Applications       |
|--------------------------------|---|---------------------------------|
| Hosting International Students | Yes 3   | Fall: 1-Apr<br>Spring: 1-Oct    |
| Sending Students Abroad        | Yes<br>8 students or up to the number of international students hosted. | Varies at each host institution |

### Who can participate?

#### Academic programs available for exchange students:

Aerospace Engineering, Agricultural and Extension Education, Agricultural Biology, Agronomy, Animal Science, Anthropology, Art, Biochemistry, Biology, Chemical Engineering, Chemistry, Civil Engineering, Communication Disorders, Communication Studies, Computer Science, Conservation Ecology, Counseling and Community Psychology, Criminal Justice, Cybersecurity, Dance, Early Childhood Education, Economics, Energy Economics, Educational Leadership, Electrical Engineering, Elementary Education, Engineering Physics, Engineering Technology, English, Environmental Science, Family and Consumer Sciences Education, Fashion Merchandising and Design, Finance, Fisheries and Wildlife Science, Food Science and Technology, Foreign Languages, Gender and Sexuality Studies, General Agriculture, General Business, Genetics and Biotechnology, Geography, Geology, Geomatics, Government, History, Horticulture, Hotel, Restaurant & Tourism, Management, Human Development and Family Science, Human Nutrition and Dietetic Science, Industrial Engineering, Information and Communication Technology, Information Systems, International Business, Journalism and Media Studies, Justice, Political Philosophy and Law, Kinesiology, Linguistics, Management, Marketing, Mathematics, Mechanical Engineering, Microbiology, Music, Natural Resource Economics and Policy, Philosophy, Physics, Psychology, Public health, Range Science, Secondary Education, Social Work, Sociology, Soil Science, Special Education, and Theatre Arts. **Restrictions:** Nursing and CMI (Creative Media Institute) & English (minus SPCD 110/ENGL 111M) **Students' requirements:** 3.0 GPA preferred. Language Proficiency IBT 68 (undergrad)/79 (grad), IELTS 6 (undergrad)/6.5 grad, TOEFL PBT 520 (undergrad)/549(grad), Cambridge Test (CAE/CPE) C2 (undergrad)/C1(grad), Duolingo 95 (undergrad)/104 (grad).

#### Information for international students

- **Academics**

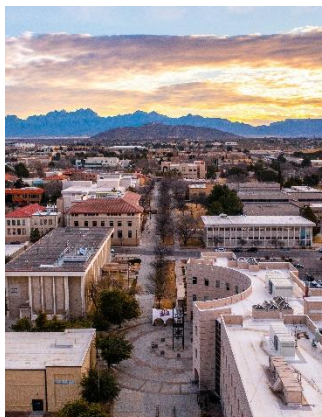
**Main language of Instruction:** English

**Are there any regular classes available in a different language?** No.

- **Living**

**Approximate living costs per semester:** Housing: \$2,811.50 to \$4,498, plus a \$50 application fee and a refundable \$200 deposit Meal Plans: \$135 to \$2,604, plus a \$15 application fee. Mandatory International Student Insurance: \$780. Books & Supplies: \$620

**Additional fees:** For more information, please check the specific website for international students: <https://oel.nmsu.edu/educationabroad/incoming-exchange-students/>



## Institutional Information



**Institution Name:** New Mexico State University

**Country:** United States

**Location:** Las Cruces, New Mexico

**Website:** <http://www.nmsu.edu>

**Description:** New Mexico State University commonly referred to as NMSU-Las Cruces, NMSU, New Mexico State, or NM State), is a major public, land-grant, research university in Las Cruces, New Mexico, United States. Founded in 1888, it is the oldest public institution of higher education in the state of New Mexico. NMSU is the second largest four-year university in the state, in terms of total enrollment across all campuses as of 2011, with campuses in Alamogordo, Carlsbad, Doña Ana County, and Grants, with extension and research centers across New Mexico.

For more information on New Mexico State University please see the university's webpage: <http://www.nmsu.edu>

# University of Texas at El Paso

## Participation in the student exchange program

| Current Status with CONAHEC    |   | Deadline for Applications       |
|--------------------------------|---|---------------------------------|
| Hosting International Students | Yes<br>10   | Fall: 15-May<br>Spring: 15-Sep  |
| Sending Students Abroad        | Yes<br>8 students or up to the number of international students hosted. | Varies at each host institution |



## Who can participate?

### Academic programs available for exchange students:

Business Administration (Several Fields), Education (Several fields), Liberal Arts (Several fields), Health Sciences (Several fields), Science (Several Fields), Nursing and Pharmacy.

For more information: <http://catalog.utep.edu/undergrad/degree-programs/>

**Restrictions:** Engineering. **Students' requirements to apply:** Completion of one academic year of University study. 2.5 overall grade point average (GPA) or equivalent. English Proficiency Test Scores. If deemed necessary a Skype Interview will be conducted. Application form that includes transcripts, and proof of financial resources.

## Information for international students

### • Academics

**Main language of Instruction:** English. **Are there any regular classes available in a different language?** Yes, few courses in Spanish available and language courses.

**Full-time academic load per term:** 12 credits per semester

### • Living

**Approximate monthly living costs:** UTEP offers many housing options from one-bedroom efficiencies to two-and four-bedroom apartments. For available floor plans and rates visit: <https://www.utep.edu/student-affairs/housing/future-residents/residence-floor-plans.html>. Meal plans available, for current prices visit: <https://utepdining.sodexomyway.com>. Student Health Insurance is mandatory, for rates and more information visit: <https://www.utep.edu/human-resources/services/benefits/student-health-insurance-plan.html>



## Institutional Information



**Institution Name:** University of Texas at El Paso

**Country:** United States

**Location:** Located on the El Paso-Juárez Border UTEP is the largest Hispanic-majority university in the United States. As the principal institution of higher learning in far west Texas, the University serves as a vital force in the economic, academic and cultural advancement of this bicultural region.

**Website:** <http://www.utep.edu>

**Description:** The University of Texas at El Paso was established in 1914 on a foundation of academic excellence as solid and enduring as the rugged Rocky Mountain foothills that are the University's home.

For more information about University of Texas at El Paso please see the university's webpage: <http://www.utep.edu>



# University of the Incarnate Word

## Participation in the student exchange program

| Current Status with CONAHEC    |   | Deadline for Applications       |
|--------------------------------|---|---------------------------------|
| Hosting International Students | Yes<br>3  | Fall: 1-Apr<br>Spring: 15-Sep   |
| Sending Students Abroad        | Yes<br>8 students or up to the number of international students hosted. | Varies at each host institution |

## Who can participate?

Academic programs available for exchange students:

**Restrictions:** Academic Disciplines not available: **Students' requirements:** Must have at least 2.5 grade-point average on a 4.0 scale or equivalent. Must meet English Proficiency (Minimum TOEFL Score: Internet-Based=61, Computer-Based=173, or Paper-Based=500; or Minimum IELTS Score=6.0).

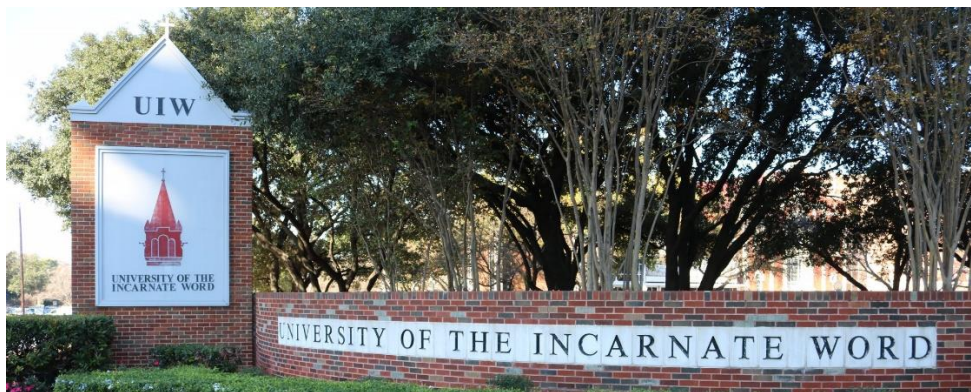
## Information for international students

- **Academics:**

**Main language of Instruction:** English

- **Living**

**Approximate monthly living costs:** Website for Housing/meals: **Additional fees:** For more information:



## Institutional Information



**Institution Name:** University of the Incarnate Word

**Country:** United States

**Location:** San Antonio, Texas

**Website:** <http://www.uiw.edu/>

**Description:**

# West Virginia University

## Participation in the student exchange program

| Current Status with CONAHEC    |   | Deadline for Applications       |
|--------------------------------|---|---------------------------------|
| Hosting International Students | Yes<br>12   | Fall: 1-Apr<br>Spring: 15-Sep   |
| Sending Students Abroad        | Yes<br>8 students or up to the number of international students hosted. | Varies at each host institution |

## Who can participate?

### Academic programs available for exchange students:

Undergraduate: Students may request courses from multiple Colleges. Refer to the Undergraduate Catalog (<http://catalog.wvu.edu/undergraduate/>) for *majors* (fields of study) within the Colleges of Arts and Sciences; Business and Economics; Engineering and Mineral Resources; Agriculture, Natural Resources, and Design; Applied Human Sciences; Creative Arts; Media; and Public Health. Graduate: programs are closed to exchange students. Please contact Education Abroad to confirm if your program of interest is available for exchange. **Restrictions:** Some academic departments including Forensics, Pharmacy, and the Master's in Business Administration do not allow exchange students to join their courses. Please contact Education Abroad to confirm if your program of interest is open to exchange students. **Students' requirements:** GPA: 2.5 on a 4.0 scale or equivalent. English Proficiency: TOEFL Paper Based: 550; TOEFL Internet Based: 79; IELTS: 6.5; Duolingo English Test: 105

## Information for international students

**Academics:** Course offerings by semester can be viewed at <http://courses.wvu.edu/>. Course selection guidelines: • Undergraduate courses are numbered 100-499, while graduate courses are numbered 500+. • Exchange students should not request online courses. • Students should only select courses offered on the Morgantown Campus. WVUIT and Potomac State campuses are not open for exchange. • Practicums, seminars, and independent study courses are generally not open to exchange students. Requests may be reviewed on a case-by-case basis.

**Main language of Instruction:** English

- **Living**

**Semester expenses:** Education Abroad Fee: \$150 USD. On-campus residence

halls: <http://housing.wvu.edu/>. Dining plans (required with residence hall

contract): <https://diningservices.wvu.edu/>. Student Health

Insurance: <https://talentandculture.wvu.edu/student-insurance>. More detailed information can be found on our website for incoming students: <https://educationabroad.wvu.edu/incoming>.

Email [educationabroad@mail.wvu.edu](mailto:educationabroad@mail.wvu.edu) with additional questions.



## Institutional Information



**Institution Name:** West Virginia University

**Country:** United States

**Location:** Morgantown, West Virginia

**Website:** <http://www.wvu.edu>

**Description:** West Virginia University (WVU) is a public land grant research university in Morgantown, West Virginia, United States. Its other campuses include the West Virginia University Institute of Technology in Montgomery and Potomac State College of West Virginia University in Keyser; and a second clinical campus for the University's medical and dental schools at Charleston Area Medical Center in Charleston. WVU Extension Service provides outreach with offices in all of West Virginia's 55 counties. Since 2001, WVU has been governed by the West Virginia University Board of Governors.

For more information about West Virginia University please see the university's webpage:

<http://www.wvu.edu>



# Western New Mexico University

## Participation in the student exchange program

| Current Status with CONAHEC    |   | Deadline for Applications       |
|--------------------------------|---|---------------------------------|
| Hosting International Students | Yes<br>1  | Fall: 15-Mar<br>Spring: 30-Oct  |
| Sending Students Abroad        | Yes<br>8 students or up to the number of international students hosted. | Varies at each host institution |



## Who can participate?

Academic programs available for exchange students:

Business Management (Several Areas). *Restrictions:* None

Students' requirements: <http://admissions.wnmu.edu>

## Information for international students

- **Academics**

Main language of Instruction: English

Are there any regular classes available in a different language? No.

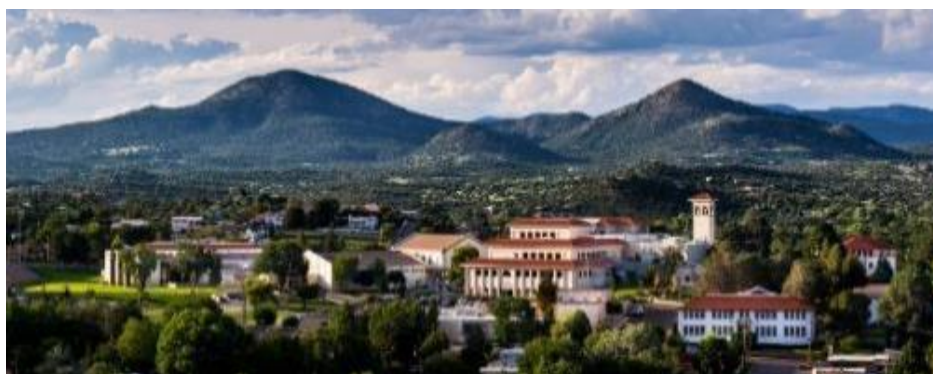
- **Living**

Approximate monthly living costs: N/A

Additional fees: Health Insurance

For more information, please check the specific website for international students:

<http://admissions.wnmu.edu/international/>



## Institutional Information



**Institution Name:** Western New Mexico University

**Country:** United States

**Location:** Silver City, New Mexico

**Website:** <http://wnmu.edu>

**Description:** Western New Mexico University is a public university located in Silver City, in the U.S. state of New Mexico. It has served the people of the state and its surrounding areas as a comprehensive, regional, rural, public coeducational university since 1893 and caters to a student body diverse in age, culture, language and ethnic background.

For more information about West Virginia University please see the university's webpage:

<http://wnmu.edu/about/>

# Langara College

## Participation in the student exchange program

| Current Status with CONAHEC    |   | Deadline for Applications       |
|--------------------------------|---|---------------------------------|
| Hosting International Students | 2   | Fall: 1-May<br>Spring: 31-Oct   |
| Sending Students Abroad        | Yes<br>8 students or up to the number of international students hosted. | Varies at each host institution |

### Who can participate?

**Academic programs available for exchange students:** General first and second year undergraduate Arts and Science courses, Business Administration (Several Fields), Computer Information Systems, Computer Science, Fine Arts, and many others. **Restrictions:** Certificate and diploma programs and some academic programs, such as nursing, do not accept exchange students. Many other courses have acceptance criteria, pre-requisites or may require on-site diagnostic tests that may preclude exchange students from admission. Students and advisors should check on-line course details to determine if they will meet admission requirements. Specific questions about program availability or admission requirements can be directed to the exchange coordinator at Langara. **Students' requirements:** TOEFL (paper-based) 550 or higher and an essay score of 4.0 or higher, OR TOEFL (Internet-based) 80 or higher and a minimum of 18 in Listening, 20 in Reading, 18 in Speaking, and 20 in Writing, OR IELTS 6.5. Institution-based TOEFL results are not accepted for admission. Note: Particular courses may have higher admission standards. Exchange students will only be permitted to take three courses at Langara. **NOTE: Exchange students are not permitted to take third and fourth year courses.**

### Information for international students

- Academics**

Most of the courses are general first and second year arts and science courses that prepare students to enter the third year of university. **Main language of Instruction:** English. **Are there any regular classes available in a different language?** No.

- Living**

**Approximate monthly living costs:** Housing: \$870 (homestay). Meals: \$400. Local transportation: \$200. Others: Entertainment \$80. Textbooks \$300.

**Additional fees:** Exchange students who would like to acquire a UPass for the transit system would need to pay the Student Union and Building Legacy Fees of approximately \$145 and approximately \$164 for the UPass. This would allow the student to obtain a monthly bus pass that can be used in all transit zones (normally \$170/month). Health insurance is required ([www.ihaveaplan.ca](http://www.ihaveaplan.ca)). For more information, please check the specific website for international students: <https://langara.ca/international-education/future-students/index.html>



### Institutional Information



**Institution Name:** Langara College  
**Country:** Canada

**Location:** 100 West 49th Avenue,  
Vancouver, BC, Canada V5Y 2Z6

**Website:** <http://www.langara.ca>

**Description:** Langara College is a public degree-granting college in Vancouver, British Columbia, Canada, which serves approximately 21,000 students annually through its university, career, and continuing studies programs. In 1970, Vancouver City College opened its West 49th Avenue campus. On April 1, 1994, Langara College was established as an independent public college under the Provincial College and Institute Act. The college takes its name from the neighbourhood in which it is situated, which was named after Spanish Admiral Juan de Lángara.

For more information about Langara College please see the university's webpage: <http://www.langara.ca>

# Mount Royal University



## Participation in the student exchange program

| Current Status with CONAHEC    |   | Deadline for Applications       |
|--------------------------------|---|---------------------------------|
| Hosting International Students | Yes<br>2  | Fall: 1-Mar<br>Spring: 1-Oct    |
| Sending Students Abroad        | Yes<br>8 students or up to the number of international students hosted. | Varies at each host institution |

## Who can participate?

### Academic programs available for exchange students:

Arts (Several Fields), Business Administration (Several Fields), Child Studies, Communication, Computer Information Systems, Education, Health and Physical Education, Interior Design, Bachelor of Science (Several Fields), Social Work *Restriction:* Midwifery & Nursing

**Students' requirements:** Minimum GPA 3.0. English proficiency must be demonstrated by presentation of Test of English as a Foreign Language (TOEFL) with a minimum score of 560 (paper) or 220 (computer). Results are valid for two years only. One year of study in a related discipline at a post secondary institution in the USA and Mexico.

## Information for international students

### • Academics

**Main language of Instruction:** English. **Are there any regular classes available in a different language?** No. For more information visit:

<https://www.mtroyal.ca/Admission/AdmissionRequirements/english-language-proficiency-requirement-institutional.htm>

**Full-time academic load per term:** 9 - 15 credits per semester

### • Living

**Approximate monthly living costs:** Housing: \$2,800-4,000 (per semester, plus fees and deposit). Meals: \$300. Local transportation: \$145. Others: Exchange Program Participation Fee per semester \$300. Emergency Medical Insurance per semester \$225. For more information, please check the specific website for international students: [mru.ca/inbound](http://mru.ca/inbound)



## Institutional Information



**Institution Name:** Mount Royal University

**Country:** Canada

**Location** Mount Royal University is located in the southwest quadrant of Calgary, Alberta, Canada, a cosmopolitan city of over 1.3 million people set in a spectacular location next to the Canadian Rockies. Calgary will provide you with excellent year round recreational opportunities both within the city and by taking a short trip to the mountains. Hiking, biking, rollerblading, snowboarding, skiing and climbing are just a few of the many outdoor pursuits; you can also enjoy great food, music and cultural events. Calgary is the national headquarters for the energy industry and enjoys a rich and diversified economy.

**Website:** [mru.ca](http://mru.ca)

**Description:** More than 10,000 undergraduates attend Mount Royal University each year, with additional individuals registering in courses offered by the faculty of Continuing Education and in the Mount Royal University Conservatory. The university offers 12 degree programs with 36 majors to choose from. For more information Mount Royal University please see the university's webpage: [mru.ca](http://mru.ca)



# Selkirk College

## Participation in the student exchange program

| Current Status with CONAHEC    |   | Deadline for Applications       |
|--------------------------------|---|---------------------------------|
| Hosting International Students | Yes<br>3  | Fall: 1-May<br>Winter: 1-Oct    |
| Sending Students Abroad        | Yes<br>8 students or up to the number of international students hosted. | Varies at each host institution |

## Who can participate?

### Academic programs available for exchange students:

Business Administration, Resort and Hotel Management, Digital Arts and New Media, Early Childhood Care and Education, and many others. Restrictions. **Restrictions:** None  
**Students' requirements:** Must be a student in good standing at a CONAHEC-member institution. Click here for more information on admissions requirements.

<http://selkirk.ca/international/how-apply-selkirk-college/admission-requirements-international>

## Information for international students

- **Academics**

**Main language of Instruction:** English **Are there any regular classes available in a different language?** No.

**Full-time academic load per term:** 15-21 credits or 4-5 courses. Please review the start dates for each term: <http://selkirk.ca/programs-courses/explore-programs/start-in-winter>

- **Living**

**Approximate monthly living costs:** \$800-\$1000

For more information, please check the specific website for international students: <http://selkirk.ca/international>



## Institutional Information



**Institution Name:** Selkirk College

**Country:** Canada

**Location:** The main campuses are located in Castlegar and Nelson, British Columbia. Selkirk has eight campuses in total. Click here for more information:

<http://selkirk.ca/about-us/coming-to-campus/campus-locations>

**Website:** <http://www.selkirk.ca>

**Description:** Selkirk College was established in 1966 as a fully accredited public post-secondary institution that offers access to a wide variety of university courses and career directed 2-year programs.

For more information about Selkirk College please see the university's webpage: <http://www.selkirk.ca>

# University of Regina

## Participation in the student exchange program

| Current Status with CONAHEC    |   | Deadline for Applications       |
|--------------------------------|---|---------------------------------|
| Hosting International Students | Yes   | Fall: 1-April<br>Spring: 1-Oct  |
| Sending Students Abroad        | Yes<br>8 students or up to the number of international students hosted. | Varies at each host institution |

## Who can participate?

### Academic programs available for exchange students:

Over 70 programs: Arts, Business Administration, Education, Engineering & Applied Science, Media, Arts & Performance, Kinesiology & Health Studies, Science, Social Work. Please review the programs at: <https://urconnected.uregina.ca/program.do> **Restrictions:** Students will not be accepted into Nursing, Psychology, Journalism and Pre-professional program. The Faculty of Engineering has limited capacity and we can accept a maximum of 2 students into the programs. **Students' requirements:** Must be in good academic standing (at least a 70% or 2.7 GPA) at the Conahec - member institution. Lectures are all taught in English. It is highly recommended that one of these ELP tests are met: TOEFL: Internet based (83); Reading (20); Listening (20); Speaking (20); Writing (20). IELTS: Overall Band score of 6.5, with no band less than 6.0. Submit a second application directly to the UR <https://www.uregina.ca/international/study-abroad/incoming-students/apply.html>

### Information for international students

- Academics**

**Main language of Instruction:** English. **Are there any regular classes available in a different language?** No.

**Full-time academic load per term:** 9-15 credits or 3-5 courses.

- Living**

**Approximate living costs per semester:** \$3,200-8,300 CAD approx. if living on campus (Residence: \$2,200-\$4,600, Meal Plan: \$1,000-3,700)

For more information, please check the specific website for international students: <https://www.uregina.ca/international/>



## Institutional Information



**Institution Name:** University of Regina

**Country:** Canada

**Location:** The main campus is located in the city of Regina in the province of Saskatchewan.

**Website:** <http://www.uregina.ca>

**Description:** The University of Regina has roots in Regina College, a small residential high school established by the Methodist church in 1911. The College grew in size and significance becoming a campus of the University of Saskatchewan and, ultimately, an independent degree granting university – the University of Regina – in 1974. Currently, it is one of Canada's top 10 comprehensive universities.

**Support is our strength:** From the moment we meet you and your family, until the moment you find employment after graduation, we provide personalized services to encourage and assist in your academic and career needs.

**State of the art facilities:** Come and discover our new campus. It is modern, clean and convenient.

**The U of R is a global community:** We are large enough to host students from over 90 countries, yet small enough to give you a more personalized and focused academic experience. You can get to know your professors and faculty members. The student to faculty ratio is 20:1. We also have many associations that you can get involved with. Check it out!

# University of the Fraser Valley



## Participation in the student exchange program

| Current Status with CONAHEC    |   | Deadline for Applications       |
|--------------------------------|---|---------------------------------|
| Hosting International Students | Yes<br>3  | Fall: 1-April<br>Spring: 1-Oct  |
| Sending Students Abroad        | Yes<br>8 students or up to the number of international students hosted. | Varies at each host institution |

## Who can participate?

Academic programs available for exchange students:

. Please review the programs at: <https://www.ufv.ca/psw/>

**Restrictions: Students' requirements:** IELTS (Academic) - score of 6.5 or higher with a minimum band score of 6.0. TOEFL (includes Home Edition) - score of 88 or higher (IBT) with no section below 20

## Information for international students

- **Academics**

Main language of Instruction: English.

Full-time academic load per term: 9-15 credits or 3-5 courses.

- **Living**

Approximate living costs per semester: \$3,400 CAD if living on campus, \$1,000 CAD for meal plan

For more information, please check the specific website for international students:

<http://international.ufv.ca>



## Institutional Information



**Institution Name:** University of the Fraser Valley

**Country:** Canada

**Location:** Fraser Valley just east of Vancouver, British Columbia

**Website:** <http://international.ufv.ca>

### Description:

The University of the Fraser Valley (UFV) is a fully accredited, public university that enrolls approximately 15,000 students per year, which includes about 2000 international students from over 85 countries. UFV is recognized nationally for student success, an excellent learning environment, creative integration of programming, and our work with local communities. It is large enough to offer variety, yet offers small class sizes which allow you to get to know your instructors and learn in a hands-on environment.

Located in the beautiful Fraser Valley of British Columbia, Canada, you can find adventure in every direction. In less than an hour's drive you can get to ski hills, the ocean, or the city of Vancouver, or drive five minutes to visit the USA. The weather is temperate so you can enjoy the outdoors all year round including hiking, swimming, biking, rafting, golfing, fishing, snowboarding, skiing, and more.



# Universidad Nacional de Quilmes



## Participation in the student exchange program

| Current Status with CONAHEC    |   | Deadline for Applications       |
|--------------------------------|---|---------------------------------|
| Hosting International Students | Yes<br>3  | Fall: 31-May<br>Spring: 15-Nov  |
| Sending Students Abroad        | Yes<br>8 students or up to the number of international students hosted. | Varies at each host institution |

## Who can participate?

**Academic programs available for exchange students:**

Business Administration (Several Fields), Engineering (Several Areas), Biotechnology, Hospitality and Tourism, Social Sciences, Communication, Education, Nursing.

**Restrictions:** Maximo 3 alumnos por institucion

**Students' requirements:** Must be a student in good standing at a CONAHEC member institution.

## Information for international students

- Academics**

**Main language of Instruction:** Spanish

**Full-time academic load per term:** Contact institution for more information.

- Living**

**Approximate monthly living costs:** Housing: \$35,000. Meals: \$20,000. Local transportation: \$10,500.

**Additional fees:** Private medical insurance is mandatory.

For more information, please check the specific website for international students:  
<http://www.unq.edu.ar/secciones/261-programas-de-movilidad-estudiantil/>



## Institutional Information



**Institution Name:** Universidad Nacional de Quilmes

**Country:** Argentina

**Location:** Buenos Aires, Argentina. Quilmes is south of the city center.

**Website:** <http://www.unq.edu.ar>

**Description:** UNQ is a public university that offers courses at the graduate and undergraduate level. There are currently around 11,000 students enrolled at UNQ.

For more information please visit the university's webpage:  
<http://www.unq.edu.ar>

# Universidad Nacional del Nordeste



## Participation in the student exchange program

| Current Status with CONAHEC    |   | Deadline for Applications       |
|--------------------------------|---|---------------------------------|
| Hosting International Students | Yes 5   | Fall: 31-May<br>Spring: 15-Oct  |
| Sending Students Abroad        | Yes<br>8 students or up to the number of international students hosted. | Varies at each host institution |

## Who can participate?

### Academic programs available for exchange students:

Accounting, Administration, AgroIndustrial Engineering, Architecture, Arts, Biology, Biochemistry, Business Administration, Chemistry, Civil Engineering, Communication, Criminology, Dentistry, Economics, Education, Electrical Engineering, Electronics Engineering, Environmental Sciences, Geography, Graphic Design, History, Humanities, Information Sciences, Information Systems, International Commerce, Kinesiology, Labor Studies, Law, Mathematics, Mechanical Engineering, Nursing, Philosophy, Physics, Tourism Businesses Management, Veterinary Medicine. **Restrictions:** None  
**Students' requirements:** <http://www.unne.edu.ar>. For more information on student visas, please check: <https://www.cancilleria.gob.ar/en/services/visas/student-visa-365-days>

## Information for international students

- Academics**

**Main language of Instruction:** Spanish. **Are there any classes available in English?** No

**Full-time academic load per term:** Please contact institution for more information.

- Living**

Please contact the institution for more information:  
[cooperacioninternacional@comunidad.unne.edu.ar](mailto:cooperacioninternacional@comunidad.unne.edu.ar)



## Institutional Information



**Institution Name:** Universidad Nacional del Nordeste

**Country:** Argentina

**Location:** Corrientes

**Website:** <http://www.unne.edu.ar>

**Description:** The National University of the Northeast (Castilian: Universidad Nacional del Nordeste, UNNE) is an Argentine national university. It is located in the cities of Corrientes and Resistencia, capitals cities of the Provinces of Corrientes and Chaco respectively, and was established on December 4, 1956. Known as the university of the sun, it is the seventh-largest university in Argentina by student enrollment numbers.

For more information please visit the university's webpage:  
<http://www.unne.edu.ar>

# Universidad Católica Boliviana "San Pablo"



## Participation in the student exchange program

| Current Status with CONAHEC    |   | Deadline for Applications       |
|--------------------------------|---|---------------------------------|
| Hosting International Students | Yes<br>30   | Fall: 31-May<br>Spring: 31-Oct  |
| Sending Students Abroad        | Yes<br>8 students or up to the number of international students hosted. | Varies at each host institution |

## Who can participate?

### Academic programs available for exchange students:

Business Administration, Tourism Administration, Architecture, Social Communication Sciences, Political Science, Public Accounting, Law, Graphic Design and Visual Communication, Economics, Environmental Engineering, Biomedical Engineering, Civil Engineering, Commercial Engineering, Systems Engineering, Telecommunications Engineering, Industrial Engineering, Mechatronics Engineering, Chemical Engineering, Psychology, Psychopedagogy. **Restrictions:** None. **Students' requirements:** Must be a student in good standing at a CONAHEC member institution. Students need to submit an application form, copy of passport, grades certificate and buddy program form.

### Information for international students

- Academics**

**Main language of Instruction:** Spanish. Some classes available in English at the Business School

- Living**

**Approximate monthly living costs:** Housing: \$250 in a shared apartment or 350-380 for a homestay. Meals: \$200. Local transportation: \$50. **Additional fees:** Check with the university



## Institutional Information



**Institution Name:** Universidad Católica Boliviana "San Pablo"

**Country:** Bolivia

**Location:** La Paz, Bolivia

**Website:** <http://www.ucb.edu.bo>

**Description:** Universidad Católica Boliviana "San Pablo" is the official name of the Catholic University of Bolivia. It is the oldest public university in Bolivia that doesn't receive economical budget of Government. Established in La Paz in 1963 and active from 1966, the university now has four regional units: La Paz, Cochabamba, Tarija and Santa Cruz de la Sierra. Its fundamental mission is the constant search for truth through research, conservation and communication of knowledge for the good of society. Through teaching and research, the Bolivian Catholic University "San Pablo" gives an indispensable contribution to the Church.

It has around 14,000 undergraduate students and 4,000 postgraduate students. The University is made up of 6 faculties, offering together 31 undergraduate and 47 undergraduate programs.



# Universidad del Valle



## Participation in the student exchange program

| Current Status with CONAHEC    |   | Deadline for Applications       |
|--------------------------------|---|---------------------------------|
| Hosting International Students | Yes<br>5  | Fall: 31-May<br>Spring: 30-Nov  |
| Sending Students Abroad        | Yes<br>8 students or up to the number of international students hosted. | Varies at each host institution |

## Who can participate?

### Academic programs available for exchange students:

Business Administration (Several Fields), Engineering (Several Areas), Hospitality and Tourism, Computer Science, Law, Communication, Interior Design, Biochemistry, Kinesiology, Aeronautics, Food Processing Engineering, Culinary Arts

**Restrictions:** None

**Students' requirements:** Must be a student in good standing at a CONAHEC member institution.

## Information for international students

### Academics

**Main language of Instruction:** Spanish

**Full-time academic load per term:** Contact Univalle for more information

### Living

**Approximate monthly living costs:** Housing: \$200. Meals: \$200. Local transportation: \$100.

**Additional fees:** None

For more information, please check the specific website for international students:



## Institutional Information



**Institution Name:** Universidad del Valle

**Country:** Bolivia

**Location:** Cochabamba, Bolivia

**Website:** <http://www.univalle.edu>

**Description:** Univalle is a private university that focuses on business, engineering, technology and medicine.

For more information on Universidad del Valle please visit the university's webpage <http://www.univalle.edu> or contact Marco Velez Ocampo at [mvelezo@univalle.edu](mailto:mvelezo@univalle.edu)

# Universidade Estadual Paulista



## Participation in the student exchange program

| Current Status with CONAHEC    |   | Deadline for Applications       |
|--------------------------------|---|---------------------------------|
| Hosting International Students | Yes<br>10   | Fall: 15-May<br>Spring: 1-Nov   |
| Sending Students Abroad        | Yes<br>8 students or up to the number of international students hosted. | Varies at each host institution |

## Who can participate?

### Academic programs available for exchange students:

Business Administration (Several Fields), Agriculture, Animal Sciences, Architecture, Fine Arts (Several Fields), Biological Sciences (Several Fields), Chemistry, Engineering (Several Areas), Communication, Computer Science, Education, Geology, History, Modern Languages, International Relations, Mathematics, Nursing, Philosophy, Physics, Psychology, Public Administration. **Restrictions:** The acceptance is related on the analysis of each faculty. **Students' requirements:** Must be a student in good standing at a CONAHEC member institution. It is recommended that students know basic Portuguese.

## Information for international students

### Academics

**Main language of Instruction:** Portuguese (contact UNESP for information on language courses). **Are there any classes available in English?** Yes. Some courses available in English <https://www.international.unesp.br/>

**Full-time academic load per term:** Contact UNESP for more information.

### Living

**Approximate monthly living costs:** Sao Paulo city: Estimated US\$700. Country side cities: Estimated US\$500. **Additional fees:** All the costs depends on the city since our institution is present across the state of Sao Paulo.

For more information, please check the specific website for international students: <https://www2.unesp.br/portal#!/international>



## Institutional Information



**Institution Name:** Universidade Estadual Paulista

**Country:** Brazil

**Location:** UNESP's knowledge education complex comprises 34 units in 24 cities, being 23 in the countryside (one at the coast of the state) and one at the capital of the state, where its administration is centralized.

**Website:** <http://www.unesp.br>  
<http://www.unesp.br/international/>

**Description:** UNESP is a large, publicly-funded university (not to be confused with the Universidade de Sao Paulo), which offers a wide variety of academic programs. It is generally considered to be among the top universities in Latin America.

Listed among the three largest and most important Brazilian universities, UNESP stands out as an example of extreme success among the multicampus institutions around the world. As one of three public universities maintained by the government of the state of São Paulo, UNESP offers quality education while developing strategic research and interacting with the society through the provision of services for the community.

For more information on Universidade Estadual Paulista please visit the university's webpage: <http://www.unesp.br>

# Universidade Federal do Paraná



## Participation in the student exchange program

| Current Status with CONAHEC    |   | Deadline for Applications       |
|--------------------------------|---|---------------------------------|
| Hosting International Students | Yes<br>20   | Fall: 30-May<br>Spring: 30-Oct  |
| Sending Students Abroad        | Yes<br>8 students or up to the number of international students hosted. | Varies at each host institution |

## Who can participate?

### Academic programs available for exchange students:

Education, Agriculture, Forestry, Business Administration (Several Fields), Fine Arts (Several Fields), Engineering (Several Areas), Computer Science, Architecture, Biology, Geography, Geology, Mathematics, Chemistry, Nursing, Anthropology, Sociology, Political Science, History, Philosophy, Psychology, Modern Languages. **Restrictions:** None. **Students' requirements:** Please note that UFPR provides portuguese language assistance at the university's language center. For eligibility information please visit: <http://www.internacional.ufpr.br>

## Information for international students

### • Academics

**Main language of Instruction:** Portuguese. **Are there any classes available in English?**

Yes. Some courses available: <http://internacional.ufpr.br/portal/courses-in-english/>

**Full-time academic load per term:** Contact institution for more information

### • Living

**Approximate monthly living costs:** Curitiba city: Estimated US\$700. Country side cities: Estimated US\$500. **Additional fees:** None

For more information, please check the specific website for international students:

<http://internacional.ufpr.br/portal/about-ufpr/>



## Institutional Information



**Institution Name:** Universidade Federal do Paraná

**Country:** Brazil

**Location:** Main campus located in Curitiba. Other campuses located across the state of Parana (one at the coast).

**Website:** <http://www.ufpr.br>

**Description:** Universidade Federal do Paraná was founded in 1912. It offers 124 undergraduate degree courses, 44 doctorate, 66 masters and 5 professional masters programs.

UFPR ranks among the 651-700 best universities in the world and 37th best in Latin-America, according to QS World University Rankings. It is placed as the 9th best in the country in the latest "Ranking Universitário Folha (RUF)", published by the nation's largest newspaper.

For more information, please visit the university's webpage: <http://www.ufpr.br/>



# Universidad de Santiago de Chile

## Participation in the student exchange program

| Current Status with CONAHEC    |   | Deadline for Applications       |
|--------------------------------|---|---------------------------------|
| Hosting International Students | Yes<br>40   | Fall: 30-May<br>Spring: 30-Oct  |
| Sending Students Abroad        | Yes<br>8 students or up to the number of international students hosted. | Varies at each host institution |

## Who can participate?

### Academic programs available for exchange students:

Engineering (Several Areas), Public Administration, Computer Science, Biology, Architecture, Business Administration (Several Fields), Philosophy, Mathematics, History, Languages, Journalism, International Studies. Please review the entire catalogue here:

<https://www.admision.usach.cl/carreras/listado> **Restrictions:** Law, Occupational Therapy and Kinesiology **Students' requirements:** 1. Must speak Spanish at an intermediate level or higher 2. Must have a student visa 3. Must have health insurance (contact university for information)

## Information for international students

### Academics

**Main language of Instruction:** Spanish. **Are there classes available in English?** No.

**Full-time academic load per term:** Contact university for information on credits

### Living

**Approximate monthly living costs:** Housing: \$300. Meals: \$300. Local transportation: \$90. Others: Various \$250 **Additional fees:** N/A

For more information, please check the specific website for international students: <http://www.drii.usach.cl/content/preguntas-frecuentes-estudiantes-extranjeros>



## Institutional Information



**Institution Name:** Universidad de Santiago de Chile

**Country:** Chile

**Location:** Santiago, Chile

**Website:** <http://www.usach.cl>

**Description:** U. de Santiago de Chile is a public and complex university that offers a broad range of academic studies in the areas of Engineering, Physics, Chemistry, Biology, Humanities, Medical Sciences, Architecture and Technology.

One of the axes of this 169 year old University –accredited in all its areas – is research.

For more information on Universidad de Santiago de Chile please visit the university's webpage: <http://www.usach.cl>

# Universidad Mayor



## Participation in the student exchange program

| Current Status with CONAHEC    |   | Deadline for Applications       |
|--------------------------------|---|---------------------------------|
| Hosting International Students | Yes<br>6 (3 Campus Santiago, 3 Campus Temuco City)                      | Fall: 7-Apr<br>Spring: 15-Oct   |
| Sending Students Abroad        | Yes<br>8 students or up to the number of international students hosted. | Varies at each host institution |

## Who can participate?

### Academic programs available for exchange students:

**School of Sciences:** Agronomy, Biotechnology, Civil Construction, Nursing, Speech and Language Therapy, Geology, Forest Engineering, Environmental and Sustainability Engineering, Civil Engineering, Civil Electronic Engineering, Industrial Engineering, Physical Therapy, Medicine, Veterinary, Nutrition, Obstetrics, Dentistry, Psychology, Medical Technology, Occupational Therapy. **School of Humanities:** Architecture, Law, Business, Management, Pedagogy (Several programs), Journalism. **School of Arts:** Digital Animation, Cinema, Design, Theater and several music programs at the conservatory. **Restrictions:** Medicine and Nursing must ask for availability. **Students' requirements:** Must be a student in good standing at a CONAHEC member institution. Application form and fact sheets can be downloaded here: <https://rrii.umayor.cl/incoming-students>.

### Information for international students

- **Academics**

**Main language of Instruction:** Spanish

**Full-time academic load per term:** Contact institution for information on credits

- **Living**

**Approximate monthly living costs:** Housing: \$300. Meals: \$300. Local transportation: \$90. Others: Various \$250

**Additional fees:** Students must acquire an International Health Insurance in their home country, before arriving to Chile.

For more information, please check the specific website for international students:

<https://rrii.umayor.cl/>



## Institutional Information



**Institution Name:** Universidad Mayor

**Country:** Chile

**Location:** Santiago, Chile

**Website:** <http://www.umayor.cl>

**Description:** Universidad Mayor is a private institution with 45 undergraduate academic programs and 100 post-graduate programs.

For more information on Universidad Mayor please visit the university's webpage: <http://www.umayor.cl>

# Universidad San Sebastián

## Participation in the student exchange program

| Current Status with CONAHEC    |   | Deadline for Applications       |
|--------------------------------|---|---------------------------------|
| Hosting International Students | Yes<br>10   | Fall: 1-May<br>Spring: 31-Oct   |
| Sending Students Abroad        | Yes<br>8 students or up to the number of international students hosted. | Varies at each host institution |

## Who can participate?

### Academic programs available for exchange students:

Nutrition, Architecture, Law, Health Sciences (Several fields), Psychology, Civil Engineering, Nursing, Education, Social Work, Pedagogy, Political Science and Public Administration, Odontology, Pharmaceutical Chemistry, Veterinary Medicine, Biochemistry, Business Economics. **Restrictions:** None

**Students' requirements:** Must be a student in good standing at a CONAHEC member institution

## Information for international students

- Academics

**Main language of Instruction:** Spanish

**Full-time academic load per term:** Contact university for more information

- Living

**Approximate monthly living costs:** N/A

**Additional fees:** N/A

For more information, please check the specific website for international students:  
<http://www.uss.cl/alumnos/programa-de-intercambio/>



## Institutional Information



**Institution Name:** Universidad San Sebastián

**Country:** Chile

**Location:** USS is headquartered in Concepción and also has campuses in Santiago, Valdivia, Puerto Montt, and Osorno.

**Website:** <http://www.uss.cl>

**Description:** Universidad San Sebastián (USS, St. Sebastian University) is a private autonomous Chilean university with its headquarters situated in Santiago de Chile. It is also located in Concepción (its previous headquarters), Valdivia, Osorno and Puerto Montt.

It was founded in 1989, and later on 2001, USS gets a formal state recognition as University. By 2011, it counted with 21.572 students.

For more information on Universidad San Sebastián please visit the university's webpage: <http://www.uss.cl>



# Pontificia Universidad Javeriana



## Participation in the student exchange program

| Current Status with CONAHEC    |   | Deadline for Applications       |
|--------------------------------|---|---------------------------------|
| Hosting International Students | Yes<br>10   | Fall: 30-Mar<br>Spring: 15-Oct  |
| Sending Students Abroad        | Yes<br>8 students or up to the number of international students hosted. | Varies at each host institution |

## Who can participate?

### Academic programs available for exchange students:

Anthropology, Architecture, Visual Arts, Biology, Political Science, Religion, Communication, Business Administration (Several Fields), Law, Industrial Design, Ecology, Nursing, Literature, Music, Philosophy, History, Engineering (Several Areas), Modern Languages, Education, Mathematics, Nutrition, Psychology, Sociology, among others. **Restrictions:** Medicine. In addition, the number of quota will depend on approval from each program and/or faculty and the acceptance will be subject to previous study of profile of the student. **Students' requirements:** Enrollment in good standing at a CONAHEC member institution and junior or senior standing.

## Information for international students

### Academics

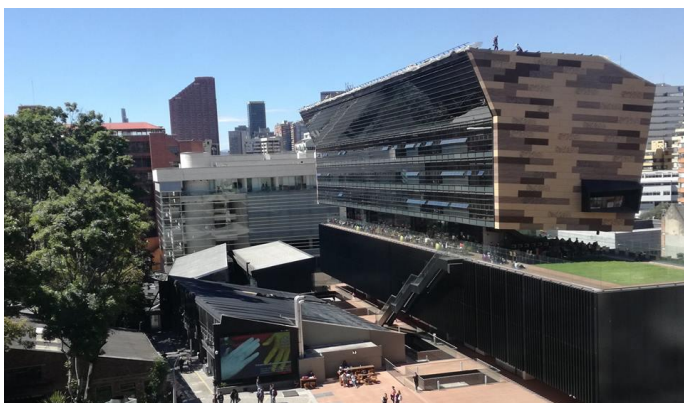
**Main language of Instruction:** Spanish. **Are there any classes available in English?** Yes. Some courses available in English

**Full-time academic load per term:** 17-20 academic credits

### Living

**Approximate monthly living costs:** 300-600 USD **No Additional fees.**

For more information, please check the specific website for international students:  
<https://www.javeriana.edu.co/internacionalizacion/intercambioestudiantilentrante>



## Institutional Information



**Institution Name:** Pontificia Universidad Javeriana

**Country:** Colombia

**Location:** Bogota, Colombia

**Website:** <http://www.javeriana.edu.co>

**Description:** A jesuit university founded in 1623, Javeriana offers over 150 academic programs at the undergraduate and graduate level.

For more information Pontificia Universidad Javeriana please visit the university's webpage: <http://www.javeriana.edu.co>

# University of Potsdam



## Participation in the student exchange program

| Current Status with CONAHEC    |   | Deadline for Applications       |
|--------------------------------|---|---------------------------------|
| Hosting International Students | Yes<br>5  | Fall: 15-June<br>Spring: 15-Dec |
| Sending Students Abroad        | Yes<br>8 students or up to the number of international students hosted. | Varies at each host institution |

## Who can participate?

### Academic programs available for exchange students:

English Studies/American Studies; Ancient Greek; Biology; Business Administration; Business Informatics; Chemistry; Computational Linguistics; Computational Science; Cultural Studies; Earth Sciences; Economics; European Media Studies; French Philology; Geoecology; Geography; German Studies; History; Italian Philology; IT-Systems Engineering; Jewish Studies; Latin Philology; Law; Life Sciences; Linguistics; Mathematics; Music; Nutrition Sciences; Patholinguistics; Educational Sciences; Philosophy; Physics; Polish Philology; Politics and Economics; Political Science; Politics, Administration and Organization; Psychology; Religious Studies; Eastern European Cultural Studies; Sociology; Spanish Philology; Sports **Restrictions:** Some fee-based continuing education programs. **Students' requirements:** Must be a student in good standing at a CONAHEC member institution.

### Information for international students

#### • Academics

**Main language of instruction:** All bachelor's courses are taught in German. Therefore applicants should possess good German skills. On the master's level, the University of Potsdam currently offers 20 degree courses in English (see: [www.uni-potsdam.de/en/studium/what-to-study/english-language-courses-and-degree-programs](http://www.uni-potsdam.de/en/studium/what-to-study/english-language-courses-and-degree-programs)). **Full-time academic load:** 30 ECTS per semester

#### • Living

**Approximate monthly living costs:** Housing: from \$400 to \$650. Meals: \$190. Local transportation: Included in the semester fee (for the entire region of Berlin-Brandenburg). Medical insurance is mandatory. **Additional fees:** Semester fee at the University of Potsdam: \$270/semester.

For more information, please check the specific website for international students: [www.uni-potsdam.de/en/international/incoming/students/exchange](http://www.uni-potsdam.de/en/international/incoming/students/exchange)



## Institutional Information



**Institution Name:** University of Potsdam

**Country:** Germany

**Location:** Am Neuen Palais 10, 14469 Potsdam

**Website:** [www.uni-potsdam.de](http://www.uni-potsdam.de)

**Description:** Young, modern, and focused on the future: Founded in 1991, the University of Potsdam already occupies a prominent position among the universities of Berlin and Brandenburg. In the 2019 Times Higher Education Young University Ranking it was ranked #4 in Germany and #24 worldwide. More than 20,000 students from 119 countries study

The University offers a broad range of bachelor's and master's programs in the fields of the arts, economics and social sciences, law, human sciences, natural sciences, and digital engineering. We currently also offer 20 master's degree programs in English. Moreover, the University closely cooperates with numerous research institutions of international acclaim located in the Potsdam area.

Potsdam's palaces and parks form one of Germany's biggest UNESCO World Heritage sites. Situated alongside the Havel River, the city is also a perfect place for outdoor activities. The German capital, Berlin, can be reached in just 30 minutes by public transport.

# University for the Creative Arts



## Participation in the student exchange program

| Current Status with CONAHEC    |   | Deadline for Nominations        |
|--------------------------------|---|---------------------------------|
| Hosting International Students | Yes<br>8  | Fall: 5-May<br>Spring: 15-Oct   |
| Sending Students Abroad        | Yes<br>8 students or up to the number of international students hosted. | Varies at each host institution |

## Who can participate?

### Academic programs available for exchange students:

Courses are offered in each of the following area: Advertising, Animation, Architecture, Business and Management, Communication and Media, Computer Arts, Crafts, Fashion, Film, Fine Arts and Digital Arts, Games, Graphic Design, Illustration, Interior Design, Marketing, Music, Performing Arts, Photography, Product Design, TV, and Textiles. **Restrictions:** None. **Students' requirements:** Must be a student in good-standing at a CONAHEC member institution. Contact institution for course pre-requisites.

## Information for international students

**Main language of Instruction:** English

- **Living**

**Approximate monthly living costs:** Please see the webpage <https://www.uca.ac.uk/study-at-uca/accommodation/> for updated information.

**Additional fees:** For more information, please check the specific website for international students: <https://www.uca.ac.uk/study-at-uca/study-abroad/incoming/#d.en.150689>



## Institutional Information



**Institution Name:** University for the Creative Arts

**Country:** England

**Location:** Farnham GU9 7DS

**Website:** <https://www.uca.ac.uk/>

The University for the Creative Arts (UCA) is one of the top creative arts universities in the UK offering courses in Architecture, Art, Design, Fashion, Film, Performing Arts and Creative Business across the counties of Surrey and Kent. It is ranked top for student satisfaction in music and communication and media courses by the Complete University Guide 2023 and The Guardian has ranked it the second specialist creative university in the UK for 2023. Creativity makes communities more vibrant, innovative, human – so the university supports each of its students to forge their own path and use their creativity to make a difference

For more information on the University for the Creative Arts, please visit the university's webpage: <https://www.uca.ac.uk/>



# Universidad de Oviedo

## Participation in the student exchange program

| Current Status with CONAHEC    |   | Deadline for Applications       |
|--------------------------------|---|---------------------------------|
| Hosting International Students | Yes<br>15   | Fall: 15-May<br>Spring: 15-Oct  |
| Sending Students Abroad        | Yes<br>8 students or up to the number of international students hosted. | Varies at each host institution |

## Who can participate?

### Academic programs available for exchange students:

Business Administration (Several Fields), Philosophy, English, Classical Studies, Geography, History, Modern Languages, Art History, Biology, Chemistry (Several Areas), Physics, Geology, Biotechnology, Mathematics, Law, Education, Social Work, Engineering (Several Areas), Public Administration. **Restrictions:** Overall max. two students per institution. Students from health sciences can not apply.

**Students' requirements:** Must be a student in good standing at a CONAHEC member institution. Contact university for additional requirements.

## Information for international students

### Academics

**Main language of Instruction:** Spanish, with some graduate courses taught in English. Contact university for more information. **Are there any classes available in English?** Yes, there are some courses available in English. Please check the offer in the following website: <http://sies.uniovi.es/ofe-pod-jsf/web/ingles/index.faces>

**Full-time academic load per term:** Contact institution for more information.

### Living

**Approximate monthly living costs:** Please see the webpage <http://www.uniovi.es/en/internacional/extranjeros> for updated information.

**Additional fees:** N/A

For more information, please check the specific website for international students: <http://www.uniovi.es/en/internacional/extranjeros>



## Institutional Information



Universidad de Oviedo

**Institution Name:** Universidad de Oviedo

**Country:** Spain

**Location:** Asturias, Spain, with campuses in Mieres, Gijón, and Oviedo

**Website:** <http://www.uniovi.es>

**Description:** The Universidad de Oviedo is a public university with around 30,000 students that offers a wide variety of academic programs.

For more information on Universidad de Oviedo please visit the university's webpage: <http://www.uniovi.es>

# Hankuk University of Foreign Studies

## Participation in the student exchange program

|                                | Current Status with CONAHEC   | Deadline for Applications       |
|--------------------------------|---|---------------------------------|
| Hosting International Students | Yes<br>30*<br>* (10-Seoul Campus, 20-Global/Yong-in Campus)             | Fall: 30-Apr<br>Spring: 30-Oct  |
| Sending Students Abroad        | Yes<br>8 students or up to the number of international students hosted. | Varies at each host institution |

## Who can participate?

### Academic programs available for exchange students:

**Global Campus:** International Area Studies (several areas) Languages (several languages), Korean Studies, Interpretation and Translation, International Sports and Leisure\*, Engineering (several areas), Global Business Technology\*, International Finance\*, Mathematics\*, Statistics\*. **Seoul Campus:** – Languages (several languages), Business Administration\*, English (several areas) \*, International Economics and Law\*, International Studies\*, Language and Trade\* **Both Campus:** Intensive Korean Language Program is offered to exchange students at their expense. **Note:** \* 50% or more of the courses are taught in English. **Restrictions:** Law School, Language & Diplomacy, Communicative Languages. **Students' requirements:** Must be a student in good standing at a CONAHEC member institution. **Note:** Students must first apply through the CONAHEC system and then be nominated and apply through the HUFS online system. If you are nominated for the Global Campus, you can only apply to the Global Campus.

## Information for international students

### • Academics

**Main language of Instruction:** Korean, English (proof of proficiency required\*), or Area Languages \*Note: Language proficiency scores are not required for students solely taking intensive Korean language)

### • Living

**Approximate monthly living costs:** Housing: \$250. Meals: \$350. Local transportation: \$20. Others: Books/Materials \$30. Mobile phone and Miscellaneous \$100. **Additional fees:** Student health insurance is mandatory (It can be purchased either at home country or in Korea).

For more information, please check the specific website for international students:

<http://international.hufs.ac.kr/>



## Institutional Information



**Institution Name:** Hankuk University of Foreign Studies

**Country:** South Korea

**Location:** Seoul, Republic of Korea. Hankuk also has a campus in Yongin, a city about 25 miles south of Seoul

**Website:** <http://www.hufs.ac.kr>

**Description:** Hankuk was originally founded as a foreign language institute. It now offers a wide variety of academic programs at the undergraduate and graduate level.

For more information on Hankuk University of Foreign Studies please visit the university's webpage: <http://www.hufs.ac.kr>

# Hanyang University ERICA Campus

## Participation in the student exchange program

| Current Status with CONAHEC    |   | Deadline for Applications       |
|--------------------------------|---|---------------------------------|
| Hosting International Students | Yes<br>10   | Fall: 30-Apr<br>Spring: 30-Oct  |
| Sending Students Abroad        | Yes<br>8 students or up to the number of international students hosted. | Varies at each host institution |

### Who can participate?

Academic programs available for exchange students:

Engineering (Several Fields), Computing, Communication (Several Fields), Languages & Culture (Several Fields), Business & Economics (Several Fields), Design (Several Fields), Sports & Arts (Several Fields). **Restrictions:** 1) College of Pharmacy, Applied Music, Dance and Performing Arts, Accounting and Tax, Actuarial Science, Smart ICT Convergence, 2) Students can only apply to ERICA campus. **Students' requirements:** 1) Must have applied through CONAHEC system. 2) Minimum GPA 60%. 3) Language Proficiency in Korean (TOPIK Level 3) or English (CEFR B2, IELTS 5.5, TOEIC 785, IBT 72, ITP 543 etc.). \*Exception: Korean Citizenship holders or Students from universities in English-speaking Countries (US, Canada - except Quebec), UK, Australia, Iceland, and New Zealand)

### Information for international students

For more information, please refer to our website for exchange students:

<http://www.hanyangexchange.com/>

- **Academics**

**Main language of Instruction:** Korean and English.

<http://www.hanyangexchange.com/academics/syllabus/>

**Full-time academic load per term:** Contact Hanyang

- **Living**

**Approximate monthly living costs:** 600,000 KRW (excluding accommodation)



## Institutional Information



**Institution Name:** Hanyang University – ERICA Campus

**Country:** Korea

**Location:** Ansan, Gyeonggi-do

**Website:**

<http://www.hanyang.ac.kr/english>

**Description:** Hanyang University is a private research university in South Korea. The main campus is in Seoul, and the second one, the Education Research Industry Cluster at Ansan, or ERICA campus, is located in Ansan. Hanyang (한양;漢陽) derives from the former name of the capital Seoul which was used during the Chosun Dynasty. Its motto and educational philosophy is Love in Deed and Truth.

For more information Hanyang University please visit the university's webpage:

<http://www.hanyang.ac.kr/english>



# MingDao University



## Participation in the student exchange program

| Current Status with CONAHEC    |   | Deadline for Applications       |
|--------------------------------|---|---------------------------------|
| Hosting International Students | Yes<br>15   | Fall: 1-May<br>Spring: 15-Nov   |
| Sending Students Abroad        | Yes<br>8 students or up to the number of international students hosted. | Varies at each host institution |

## Who can participate?

Academic programs available for exchange students:

Graphic Design, Fashion and Interiors Merchandising, Landscape Architecture, Business Administration, Marketing, Finance, Animal Sciences, Hospitality and Tourism.

**Restrictions:** None. **Students' requirements:** Beginning chinese level, application form that includes transcripts and the purpose of studying in Taiwan. More information: <http://www.mdu.edu.tw/~ciel/English/index.html>

## Information for international students

### • Academics

**Main language of Instruction:** Traditional Chinese and English. **Full-time academic load per term:** Contact university for more information

### • Living

**Approximate monthly living costs:** On campus housing available for up to 4 students per unit (600 usd per student per semester including internet and utilities).

**Additional fees:** Student health insurance.

For more information, please check the specific website for international students: <http://eng.mdu.edu.tw/interational-studies/>



## Institutional Information



**Institution Name:** MingDao University

**Country:** Taiwan

**Location:** Changhua, Taiwan

**Website:** <http://eng.mdu.edu.tw/>

**Description:** We aim to cultivate a pure mind, a broad heart filled with the desire to purify the world and its people, and a professional confidence. Students at MDU inhabit an environment like a manor, a graceful academy.

They are not only professional scholars but also people who care about ethnic vitality; they are not only flexible and tactical entrepreneurs but also people who have a taste for art and cultural history. Facing the ever-changing future challenges, students adopt learning methods and abilities that will allow them to refashion themselves as fully competent problem solvers. In terms of life, we hope to cultivate people who are well-versed in humanism, art, and applied technology. As for aspirations, we hope our students can be taught to use good judgment and wisdom in their thinking.

For more information on Ming Dao please visit the university's webpage: <http://eng.mdu.edu.tw/>

